

船用橡胶护舷

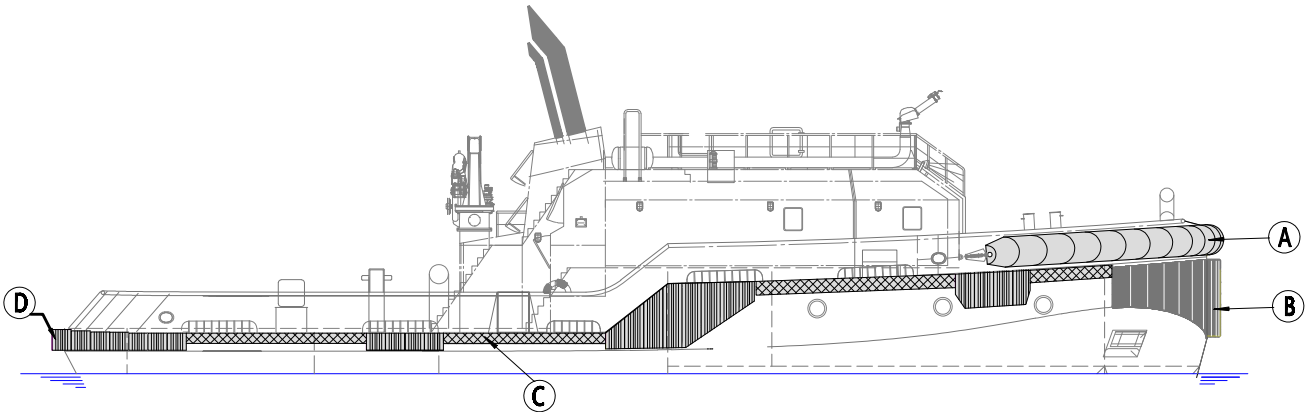
Tug Fenders

船用护舷主要用于各种港口作业拖轮，安装在船头、船舷和船尾，从事推、顶、托、靠等作业，我公司橡胶护舷采用整体成型硫化工艺，产品整体性能

Tugboat Fenders are mainly used at all kinds of harbor tugboats, installed at bow, board and aft. Rubber Fenders adopts integral molding vulcanization workmanship to obtain good



拖轮护舷的选择 Tug fenders introduction



拖轮护舷的工作环境比较恶劣，多数拖轮装有多种护舷，以适应不同工作环境的需求。

拖轮在选择护舷型号及大小时，应综合考虑船型，顶推力大

Tug fenders must work under more extreme conditions than any other fender type. Tugs may be fitted with many types of fender—each type serving a particular application.

When selecting fenders, designers should consider contact

Ⓐ 拖轮用圆筒护舷：
适用于船艏及船艉，可推动

Cylindrical fenders:
Fitted to the bow/stern of tugs and usually used to push against flared hulls and

Ⓒ 侧面装甲带：
一般采用D型、方型，或者

Side beltings:
D, Square and Composite fenders are often used as side beltings to protect the vessel during escort duties

Ⓑ 推进护舷：
常用W型、M型、锁扣型和方型等有宽大接触面的护舷，可提供较低的船体压

Pushing fenders:
Keyhole, Square and W-and M-fenders provide large contact surfaces for low hull pressures. Their grooved surfaces provide exceptional

Ⓓ 船艉：
一般使用拖轮用圆筒护舷，
Stern of tugs:
Usually use Cylindrical fenders or any other types.



拖轮护舷的具体选型，请咨询中海橡公司技术部门。

Contact CMR office for further information and

TY 拖轮圆筒护舷

Tug Cylindricals



拖轮用圆筒护舷一般安装在港口作业拖轮的船艏和船艉，也可安装在舷侧。

护舷可用链条或扎带固定在船体上，易于安装，

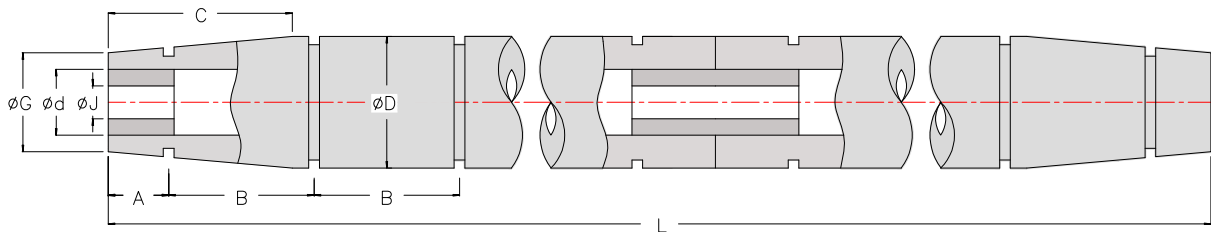
Tug cylindrical fenders are often used as the primary pushing fenders on the bow or stern of tugs, but are equally good for pushing flat-sided vessels.

Tug fender can be fixed on the hull by the chain or straps, ease of installation. Tapered ends are



护舷规格

Specification



ΦD	Φd	A_{max}	B_{max}	C	ΦG	ΦJ	重量 weight
250	125	200	570	500	190	75	48
300	150	225	600	700	225	75	69
350	175	250	650	800	250	85	94
400	200	300	670	800	300	100	123
450	225	300	700	850	350	100	155
500	250	300	730	900	375	100	191
600	300	350	800	900	450	125	276
800	400	350	930	1000	600	125	490
900	450	350	1000	1100	675	150	620
1000	500	350	1060	1200	750	150	766

[Units: mm, kg/m]

安装

小型护舷一般采用链条固定到船体上,大型的护舷可采用扎带或链条。

Attachment:

Smaller fenders (≤ 500 mm diameter) are usually fixed by a longitudinal chain through the bore of the fender, connected to the hull by turnbuckles to tension the chain. Larger fenders often use supplementary chains or

